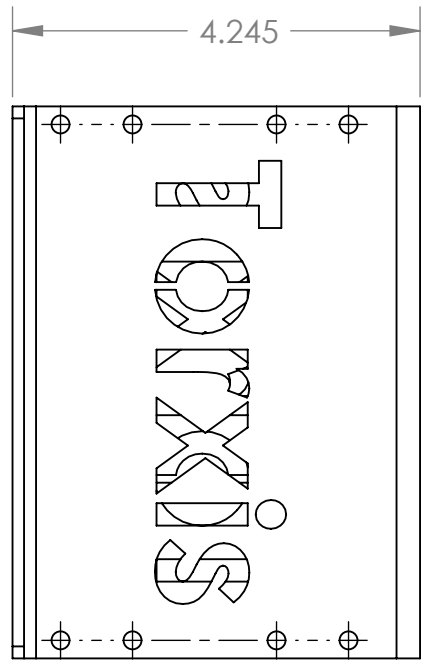
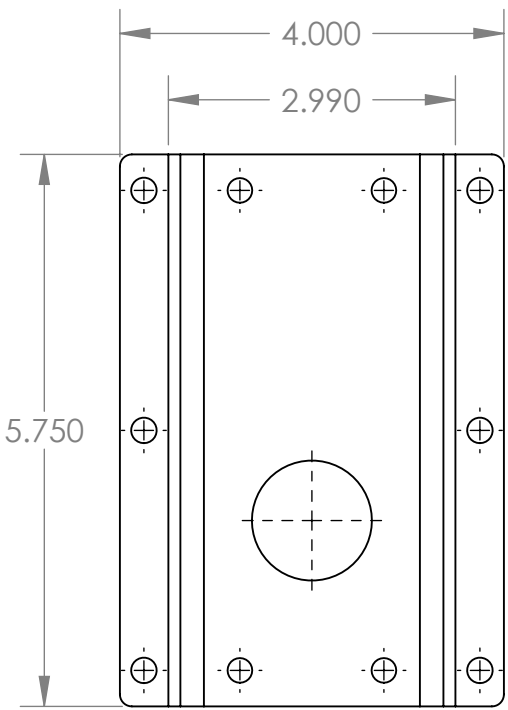
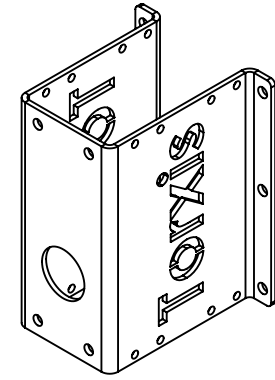


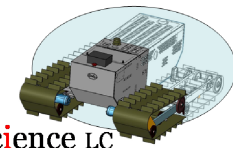
THE INFORMATION CONTAINED IN THIS DRAWING IS THE SOLE PROPERTY OF INVESCENCE, L.C. ANY REPRODUCTION IN PART OR WHOLE WITHOUT THE WRITTEN PERMISSION OF INVESCENCE, L.C. IS PROHIBITED. ALL RIGHTS RESERVED © 2010



NOTES:

1. INTERPRET PER ASME Y14.41-2003. THIS DRAWING SHALL BE USED WITH MODEL OF THE SAME NAME FOR COMPLETE PRODUCT DEFINITION.
2. TUMBLE PARTS PRIOR TO ANODIZATION.

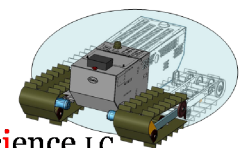
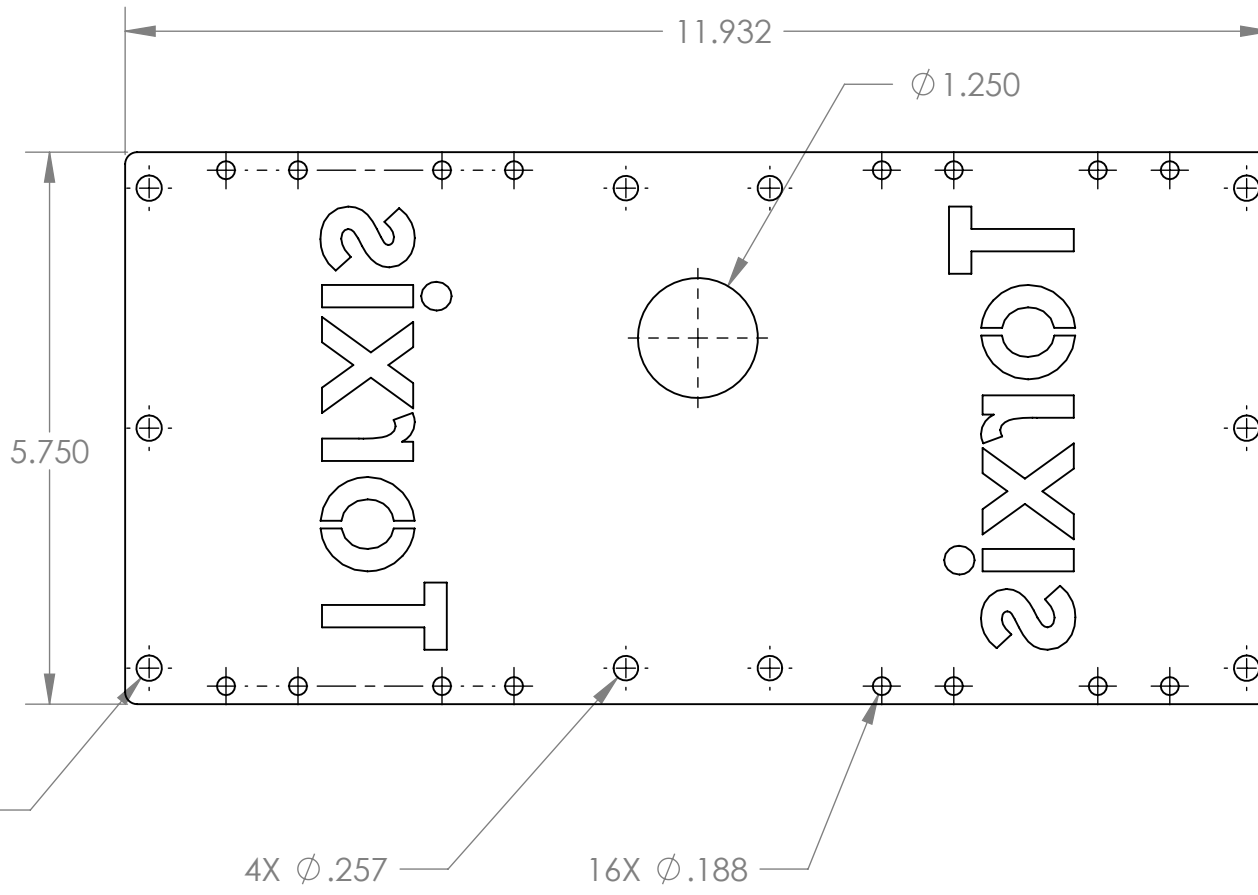
UNLESS OTHERWISE SPECIFIED DIMENSIONS ARE IN INCHES TOLERANCES ARE: FRACTIONS DECIMALS ANGLES X.X ± 0.2 IN X ± 2.0 X.XX ± 0.020 IN X.X ± 0.5 X.XXX ± 0.005 IN X.XX ± 0.1	APPROVALS DRAWN	DATE
	COLLIN LEWIS	8/9/2010
	CHECKED	
	COG ENG	
MATERIAL ALUM 5052 OR EQ	QA	
FINISH BLACK ANODIZE	RELEASED	
DO NOT SCALE DRAWING		



Invescence LC
The science of invention

CAGE CODE		54FP9	
BRACKET, BASE, MDLR			
SIZE A	DWG. NO. i01168.BS_BRKT	REV.	01
SCALE 1:2	SHEET 1 OF 2		

THE INFORMATION CONTAINED IN THIS DRAWING IS THE SOLE PROPERTY OF INVENSIENCE, L. C. ANY REPRODUCTION IN PART OR WHOLE WITHOUT THE WRITTEN PERMISSION OF INVENSIENCE, L. C. IS PROHIBITED. ALL RIGHTS RESERVED © 2010



Invenscience LC
The science of invention

CAGE CODE		54FP9
BRACKET, BASE, MDLR		
SIZE A	DWG. NO. i01168.BS_BRKT	
SCALE 1:16		SHEET 2 OF 2

DO NOT SCALE DRAWING

